



Newsletter - December 2008

Monthly Newsletter of the Fond du Lac Aeromodeler's Association
Fond du Lac, WI

www.FDLAA.com

OUR GOAL is to be the friendliest club for pilots *and* spectators in the Midwest. We welcome anyone with an interest in R/C aviation.

FDLAA meetings are held on the second Tuesday of each month, 7:00PM (April to November)

Officers:

- President **Dave Elsinger**920-926-0551
ess@fastbytes.com
- Vice Pres. **Roy Zingsheim**920-921-5419
rzingsheim@charter.net
- Secretary **Armond Pahnke**920-948-3651
armondpa@gmail.com
- Treasurer **Howard Goeden**.....920-748-2402
hgoeden@centurytel.net

Website: www.FDLAA.com
Includes information on events, membership, and flight instruction

Web Master: **Joerg Becker**
jbecker@fdlaa.com

Editor: **Doug Woolridge** .920-907-6159
dwoolridge@fdlaa.com

2008 FDLAA Events:

- Jan 1st New Year's Fly-in
Starting by 10AM at the field
- Apr 14th Club Meeting (7PM)

Other Events:

- Jan 4th Waukesha Swap Meet

FEATURED PHOTO:



This is Doug W's Quality Fiberglass C-130, built by Bob S. It has a 101" span and is powered by four 0.30 four strokes.

--Nice job Bob and Doug--

PRESIDENT'S CORNER:

Happy Holidays!



It's the holiday season and I am hoping that you & your family have a very pleasant time.

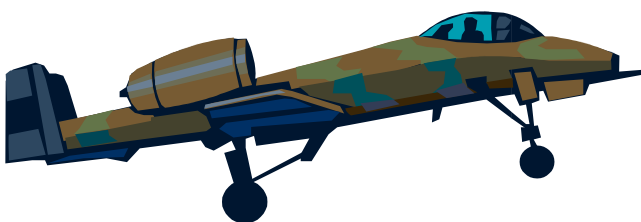
I would like to give a special thanks to Marv Ingerson. We appreciate the help he gave us as a board member throughout 2008.

In 2008 we have seen many members really make progress in their flying skills. It is a great thing to see this happen.

I would like to let the club know about the new Fondy Hobby. They have moved from the Mall to Triangle drive. The new location is in the strip mall, right along Military and Pioneer road. I wish them well & hope that our club members will help support our local merchants. They sponsored our 2008 Warbirds and are currently offering a 10% discount to FDLAA club members.

Again--Happy Holidays & see you on New Year's Day. Also January 4 2009 at Waukesha.

--Dave



MINUTES:**FDLAA Membership Meeting
October 14, 2008**Submitted by **Armond Pahnke**,
Secretary

President Dave Elsinger called the meeting to order at 7:00 P.M at Dave's shop.

Club Business

- The October minutes were read and accepted.
- Treasury report was given and accepted.
- Some prizes for the 2009 season have been bought.
- Board members nominated Duane Kieper for a lifetime membership in the club. Vote took place and it was unanimous to give Duane the membership. Congratulations Duane!
- Liability is being analyzed for future Air Shows.
- New board members for the 2009 year are Rick Laing and Doug Woolridge.
- No meetings for the months of December, January, February, and March.
- Brillion Swap meet is November 16, 2008
- Waukesha Swap meet will be January 4, 2009.
- New Year's Day Flying will be held as in the past.
- Happy Holidays!!!!!!
- Next meeting will not be until April 14th. Location will be announced in March's newsletter.

Meeting adjourned. -----7:40pm

Any Questions about the minutes of the meeting can be discussed with the Secretary or club President.

Respectfully submitted,
Armond Pahnke, Club Secretary.**ELECTIONS RESULTS:**

The hanging chads are in...

Your 2009 Officers are:

President: Dave Elsinger
Vice President: Roy Zingsheim
Treasurer: Howard Goeden
Secretary: Armond Pahnke

2009 Board of Directors:

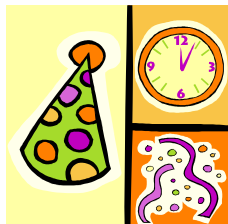
- Rick Liang
- Doug Woolridge

The 2009 Officer Elects will take their offices in January 2009.

Congratulations guys! 2009 Should be another exciting year for the club.**So, You Think You're Smart?**

Then contribute to the Newsletter!

**TIPS: Building, Flying,
Setup, and Safety
Airplanes For Sale/Wanted
Photos—Stories**

If you have anything you'd like to share,
Please contact the newsletter editor:Doug Woolridge
920-907-6159 / dwoolridge@charter.net**NEW YEAR'S FLY-IN:****When:** 10:00 AM
January 1st, 2009**Where:** The Field

Come and have a good time with your flying friends. The coffee will be hot, and the flying fun.

Think Snow!!

**RULE OF THE MONTH:**Operations Rule (c):

FIELD HOURS—The field is open for flight Dawn till Dusk, 365 days a year, except when the field is being mowed. Please close up the clubhouse and lock the gate if you are the last to leave.



JOIN THE FUN:**Put on 'dem Skis...**

The field is open year-round, and winter flying is like no other. There's nothing like the smoothness of a snow takeoff, complete with a prop wash driven snow-cloud behind the airplane.

There are usually at least four or five people flying on Saturday and Sunday mornings (winds permitting). Seaplanes also work great on the snow.

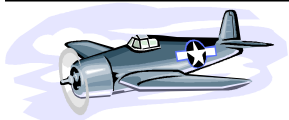
Grab your plane, get out to the field, and try some winter flying!

**PLANE TRADER:**

No Items this month...

NOTE:

Listings must be renewed each month with the newsletter editor to avoid items being listed that have already sold.

**FONDY HOBBY MOVES:**

Fondy Hobby has moved from their mall location to:

848 S. Military Road
Fond du Lac, WI

Fondy Hobby was a sponsor for our 2008 Warbirds, so please try to return the favor by shopping there if you can!

**NEXT MEETING:**

May's meeting will be Tuesday, APRIL 14, at 7:00 PM. Meeting location TBD. Have a great winter!

**MONTHLY MAGIC:****Simple Main Skis...**

It's very easy to make your own set of skis for winter flying. All you need is the following parts and a couple of hours.



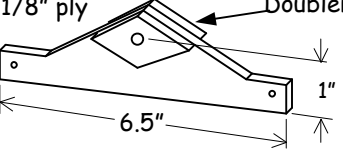
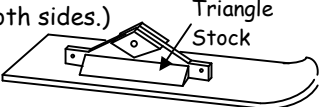
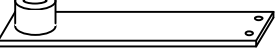
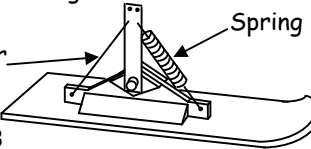


These main skis are perfect for a 4 to 6 pound airplane. Any dimensions not given are not critical. This design should give you some ideas to complete a nose or tail ski for your plane.

Parts List:

- 1/8" Plywood
- 3/8" Balsa Triangle Stock
- Wheel Collars (1 for each ski)
- Brass Bar x2 (3 x 1/2 x 1/16)
- Spring
- String / Fishline
- Brass Tubing (Inner diameter that fits your axle)
- Soldering iron with good silver solder & flux

Construction:

- 1) Cut two skis (12" x 3") out of the 1/8" plywood. Round the nose of the skis as shown: 
- 2) Soak the skis in a 1:1 mixture of water and ammonia (or alcohol) for 10 to 15 minutes.
- 3) Bend the front 2" of the ski up. A can of beans works great to hold the ski shape while they dry. 
- 4) Make two ski supports out of 1/8" plywood as shown. Make four doublers out of 1/8" ply. Small holes are 1/16" dia. The large hole should be drilled to fit the brass tubing.  MAKE SURE THE LARGE HOLE IS DRILLED TRUE!
- 5) Glue the support to the ski and reinforce with 3/8" triangle stock (both sides.) Make sure the support is perpendicular to the ski. 
- 6) Scuff the wheel collar and brass bar solder surfaces with 400 grit sandpaper and clean with rubbing alcohol. Solder the Wheel collar to the Brass Bar. Drill through the brass bar to fit your gear, using the wheel collar as a guide. The small holes are 1/16" diameter. 
- 7) Cut a 3/8" length of brass tubing and glue into the hole in the ski support
- 8) Slide the ski assembly onto your axle. Slide the bar assembly onto your axle with the wheel collar outward.
- 9) Tie a string or fish line between the Ski Support and the brass bar, as shown. Adjust the length so the bar is perpendicular to the ski. 
- 10) Fasten the spring
- 11) Align the skis so the nose of the ski is about 2 to 3 degrees up when the airplane is in level flight. Tighten the Wheel Collar set screw. Voila!

Enjoy! --Doug W.